



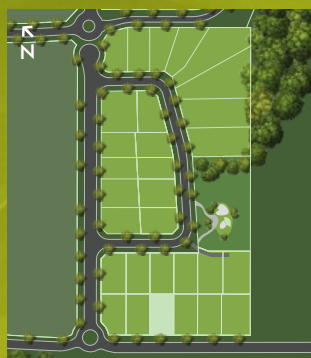
Artist's Impression

House & Land: \$1,155,000\*

You will love this well-designed and well-priced 4 bedroom split-level home, with clever open plan kitchen & living, separate upstairs rumpus and plenty of storage throughout.



Hillgrove 234



Lot 4	692m <sup>2</sup>
Lot Frontage	20.0m
Floor Area	234m <sup>2</sup>

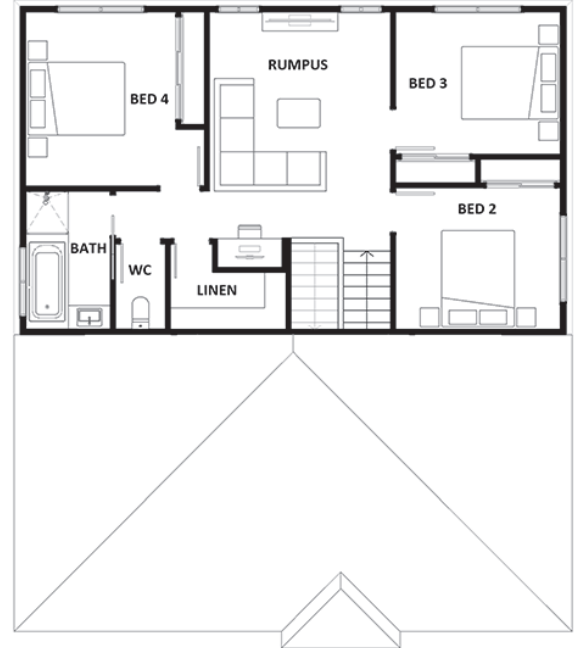
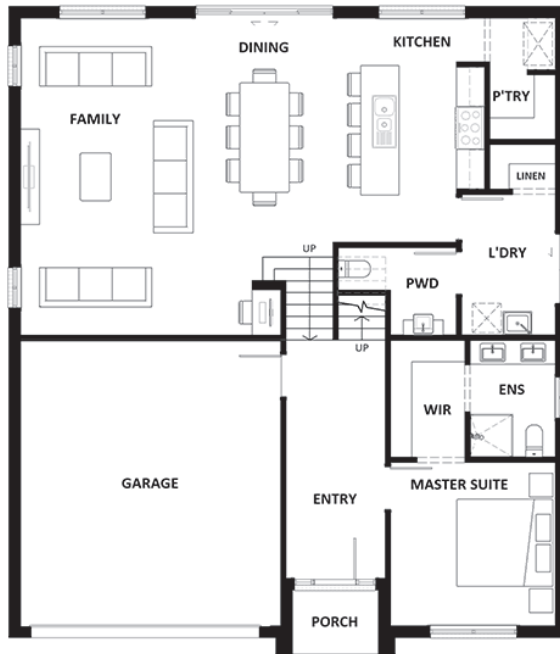
HOUSE & LAND PACKAGE INCLUSIONS:

- Hotondo's Sanctuary Inclusions
- Clever split-level design
- Cladding / render combination with Colorbond roof
- Pictured with Quinn façade (alternate selections available)
- Roomy open plan living, dining and kitchen with walk-in pantry and island bench
- 900mm stainless steel appliances and 20mm stone benchtops
- 2,550mm ceiling height
- Full-size laundry & powder room
- Spacious separate master suite with double ensuite & walk-in robe
- Ducted reverse cycle air-conditioning
- Continuous hot water system

To secure this home, contact Sceniq's project sales team on 1800 281 820 | [sceniq@rpmgrp.com.au](mailto:sceniq@rpmgrp.com.au)

[sceniq.com.au](http://sceniq.com.au)





Stage I land is due for completion late 2024.

# Hillgrove 234

Lower Floors	118.19 m <sup>2</sup>
Upper Floor	76.78 m <sup>2</sup>
Garage	36.17 m <sup>2</sup>
Porch	2.69 m <sup>2</sup>
<b>Total Floor Area</b>	<b>233.83 m<sup>2</sup></b>

You'll love living at Sceniq - enveloped by nature and amenity. This package offers the perfect entry-priced new family home.

This home design and facade can be customised to your own needs and architectural style and built on other homesites available in Sceniq (subject to builder availability and land suitability).

Contact Louise today on 1800 281 820 to secure this home or to ask about availability and prices for land now selling in Sceniq Bilambil Heights.