



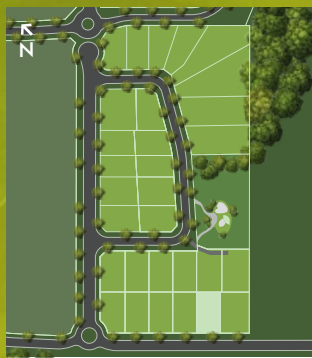
Artist's Impression

House & Land: \$1,272,000*

Your family will simply love this well-designed 4 bedroom split-level home, with clever open plan kitchen & living, separate rumpus and ample storage throughout.



Hillgrove 246



Lot 2	694m ²
Lot Frontage	20.1m
Floor Area	234m ²

HOUSE & LAND PACKAGE INCLUSIONS:

- Hotondo's Sanctuary Inclusions
- Clever split-level design
- Cladding / brick combination with Colorbond roof
- Pictured with Harper façade (alternate selections available)
- Roomy open plan living, dining and kitchen with walk-in pantry, island bench and study nook
- 900mm stainless steel appliances and 20mm stone benchtops
- 2,550mm ceiling height
- Full-size laundry & powder room
- Spacious separate master suite with double ensuite & walk-in robe
- Ducted reverse cycle air-conditioning
- Continuous hot water system

Water views may be available from Lot 2. Site works nearing completion, contact Louise to arrange a site inspection to confirm views.

To secure this home, contact Sceniq's project sales team on 1800 281 820 | sceniq@rpmgrp.com.au

sceniq.com.au

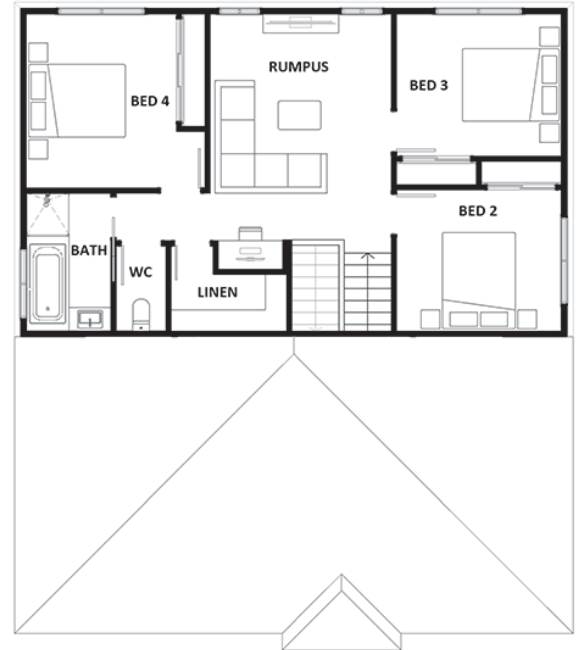
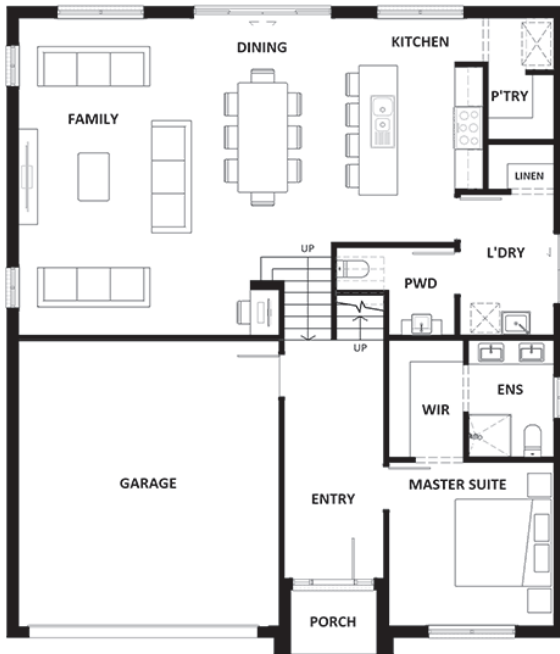




Display photo - Hillgrove living



Display photo - Hillgrove entry



Stage I land is due for completion late 2024.

Hillgrove 234

Lower Floors	118.19 m ²
Upper Floor	76.78 m ²
Garage	36.17 m ²
Porch	2.69 m ²
Total Floor Area	233.83 m²

You'll love living at Sceniq - enveloped by nature and amenity. Lot 2 is the perfect address for your family's forever home.

This home design and facade can be customised to your own needs and architectural style and built on other homesites available in Sceniq (subject to builder availability and land suitability). Lot 2 is available as land only for \$595,000.

Contact Louise today on 1800 281 820 to secure this home or to ask about availability and prices for land now selling in Sceniq Bilambil Heights.